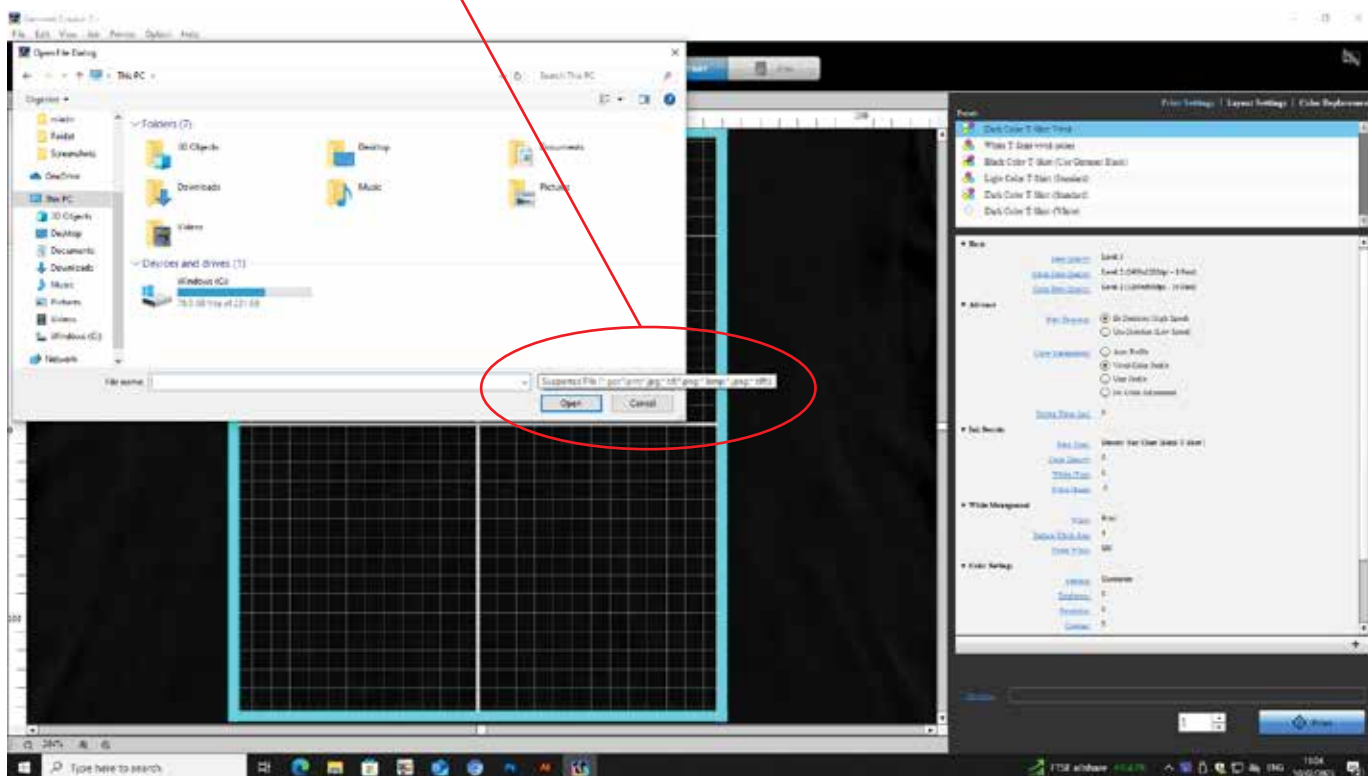


Epson SureColor F1000

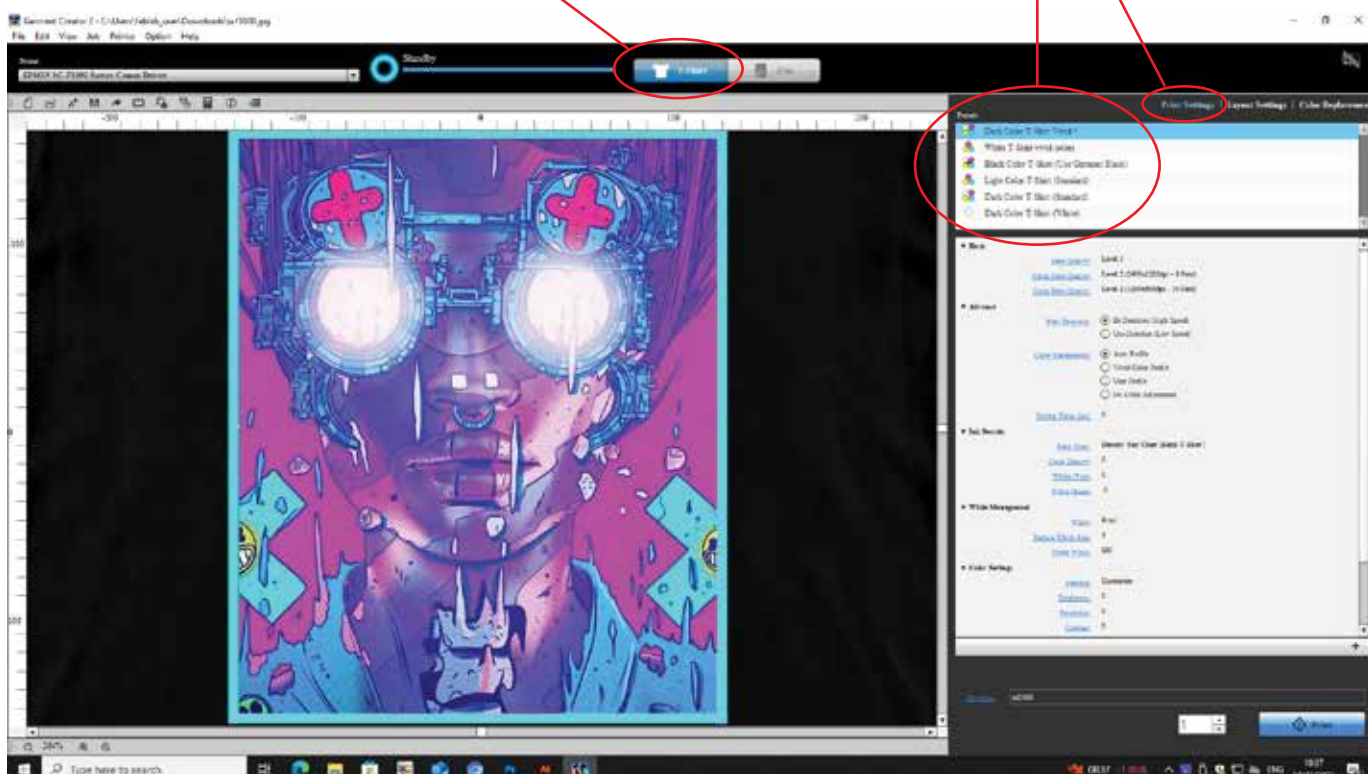
DTG / DTF Printer

Printing on T-Shirt

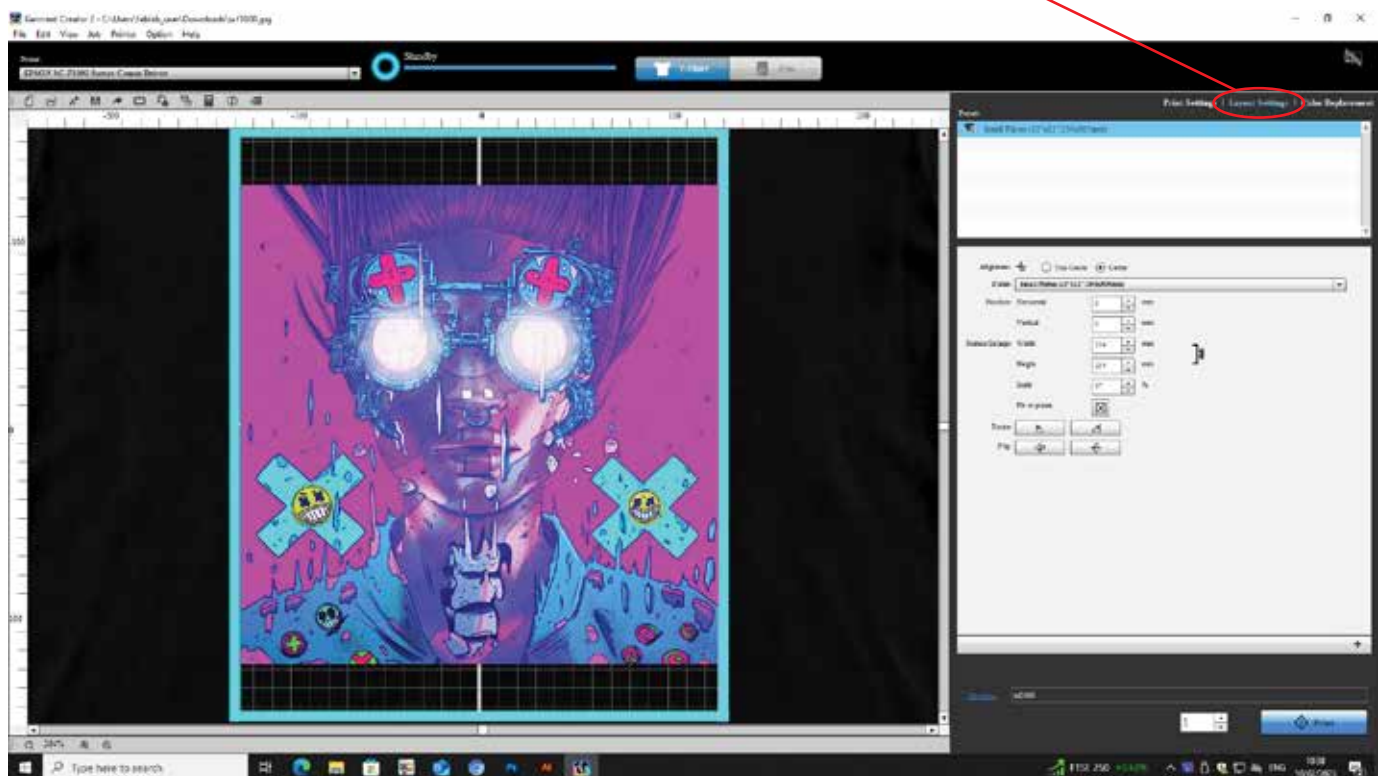
Open your file in Garment Creator 2.
 Recommended Color mode is RGB.
 Supported file forms: JPEG, TIFF, PNG and BMP.



Choose T-shirt.
 In Print Settings choose a suitable profile.
 (Use Garment Black means that black ink is not applied, so it is the base of the T-shirt.)

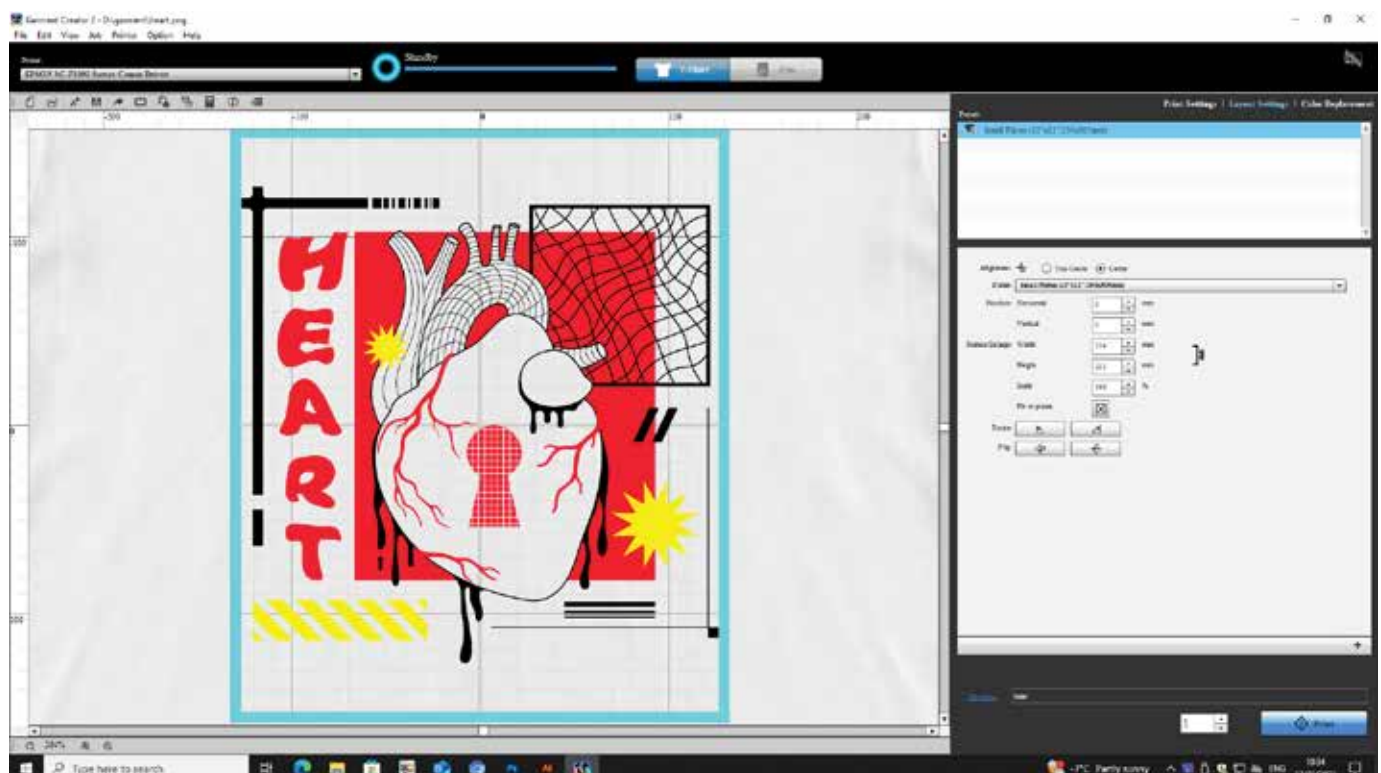


In Layout Settings you can scale, fit to plate, rotate and flip the image.
If you have a landscape image, turn it counterclockwise 90 degrees.



Printing on white fabric

Choose from Print setting presets Light colour T-Shirt.



Heat press the shirt in 175C° few seconds.



Take the frame from print bed and place it where you want our picture to be printed.



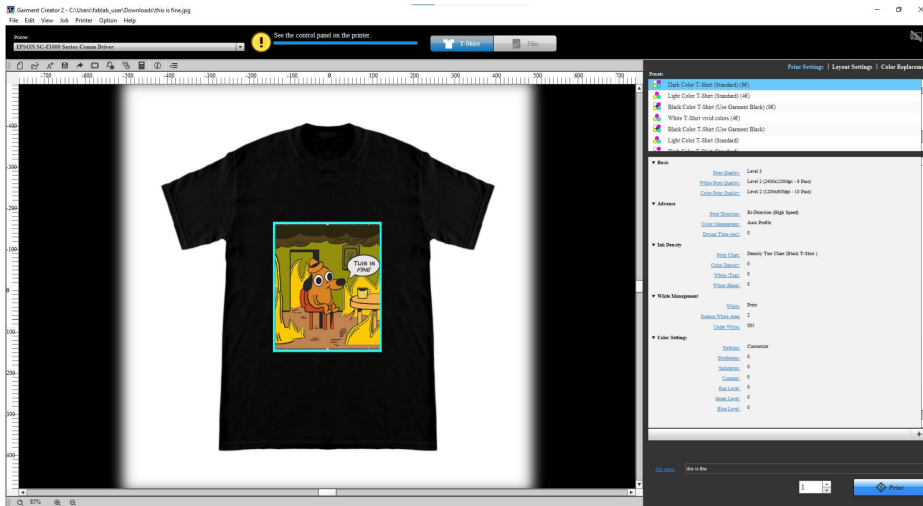
Wrap the shirt on top of the frame.



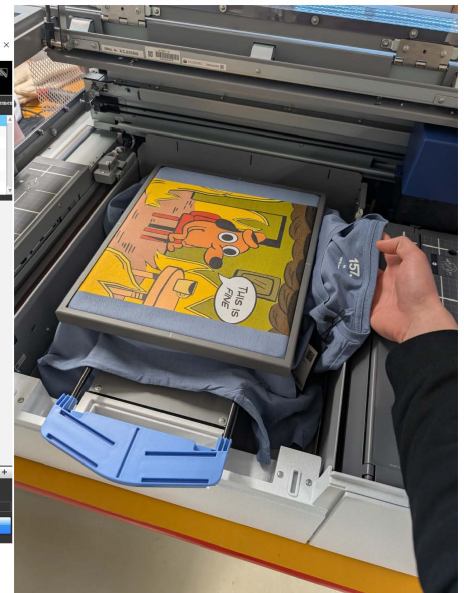
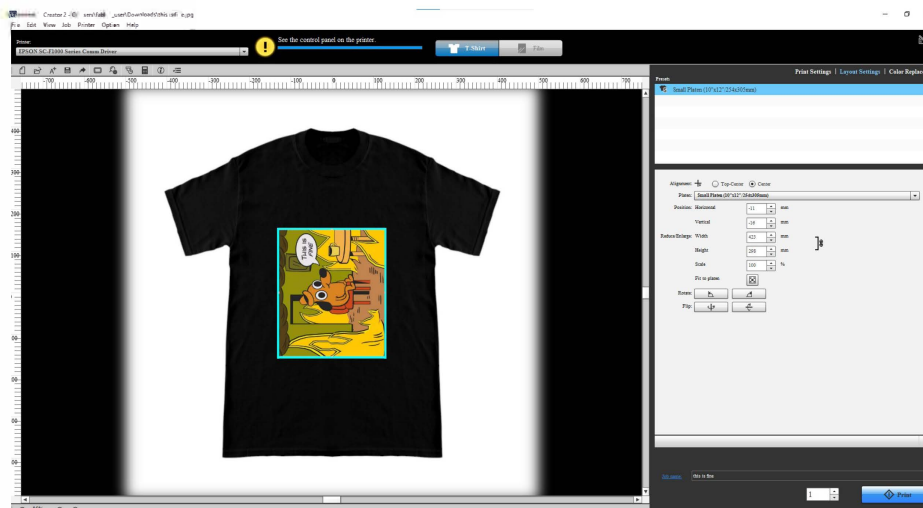
Attention!

The orientation in the garment creator doesn't match the orientation the shirt is placed in the printer!

If you're printing a vertical picture, the shirt must be placed this way (notice where the neck is).



If you're printing a horizontal picture (image flipped 90 degrees counterclockwise), the shirt must be placed this way (notice where the neck is).
This way its possible to use the whole print area for a horizontal print.



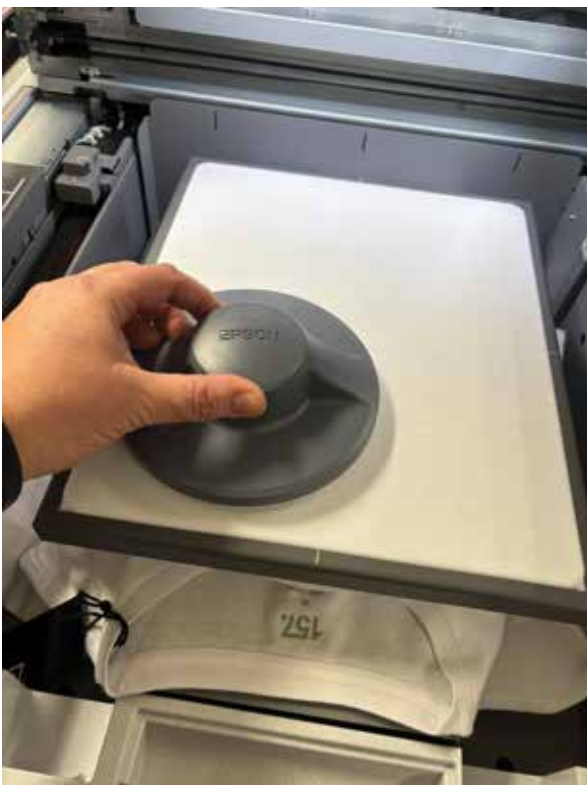
Turn the package 180 degrees so that the neckline points downwards.



Place the frame and shirt to print bed.
(If you have a landscape image and it is turned counterclockwise in Garment Creator, place the neckline on the right side of the printer. Pictures on page 5.)



Level the surface of the fabric with this tool.



Notice that the image on printer display point the opposite side than the shirt on print bed.
Start printing by pressing Start button.



Print is done.



Heat press the image in 175C° for 90 seconds. REMEMBER to use baking paper to protect the image.



Printing on black and colored fabrics if white colour is used

Pre-treatment liquid needs to be applied

Pre-treatment liquid

Pre-treatment liquids are used to create a bond between the fibers and the ink, by filling in the spaces between the weaving of the fabric.

1. Heat press the fabric 175 C° and 5 sec. This step will help remove excess moisture from the fabric and smooth the surface, so that your print won't have any wrinkles.

2. Shake the pre-treatment spray bottle. Make sure that the sprayers' nozzle is not clogged.



3. Proceed to apply the pre-treatment solution as equally as possible.



Try to use the same direction when spraying and don't overlap, the already sprayed areas too many times. This could lead to some areas being overly pre-treated and others having less pre-treatment, which would cause an uneven print with patches.

4. Use the foam roller to spread the pre-treatment equally onto the fabric to improve uniformity. Use gentle strokes and not harsh scrubbing as this would take away some of the pre-treatment and create wrinkles on the surface of the fabric.

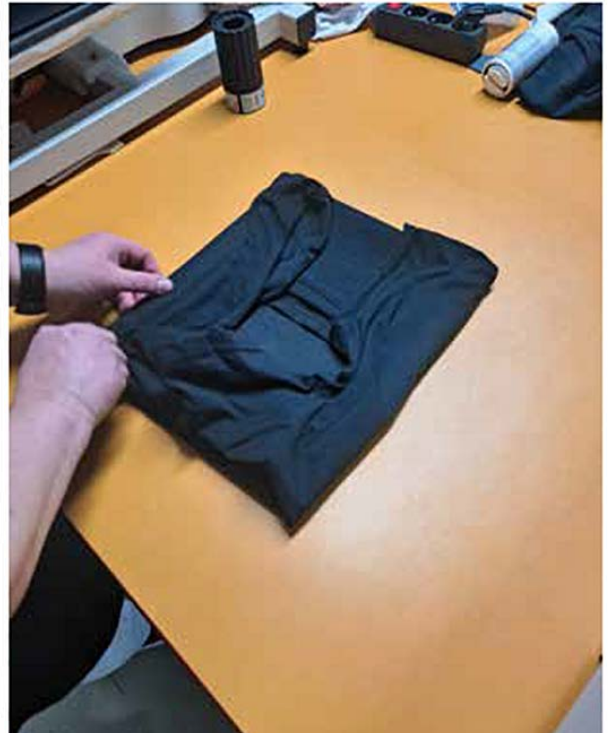


5. Dry the pre-treatment liquid by using the heat press 175 C° and 45 sec. Remember to use baking paper on the fabric. Make sure that the fabric is dry.

Take the frame from print bed and place it where you want the picture to be printed.



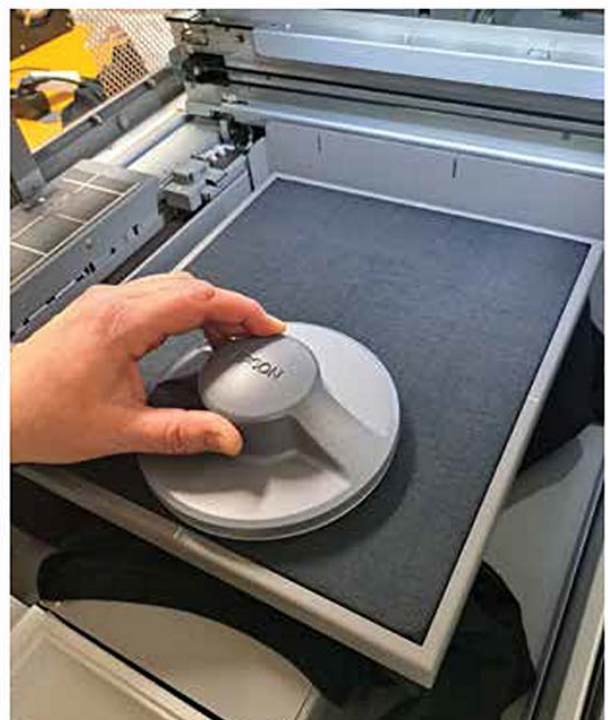
Wrap the shirt on top of the frame. Turn the package 180 degrees so that the neckline points downwards.



Place the frame and shirt to print bed.
(If you have a landscape image and it is turned counterclockwise in Garment Creator, place the neckline on the right side of the printer. See the pictures page 5)



Level the surface of the fabric with this tool.



Notice that the image on printer display point the opposite side than the shirt on print bed. Start print by pressing "Start" button.



Print is complete.

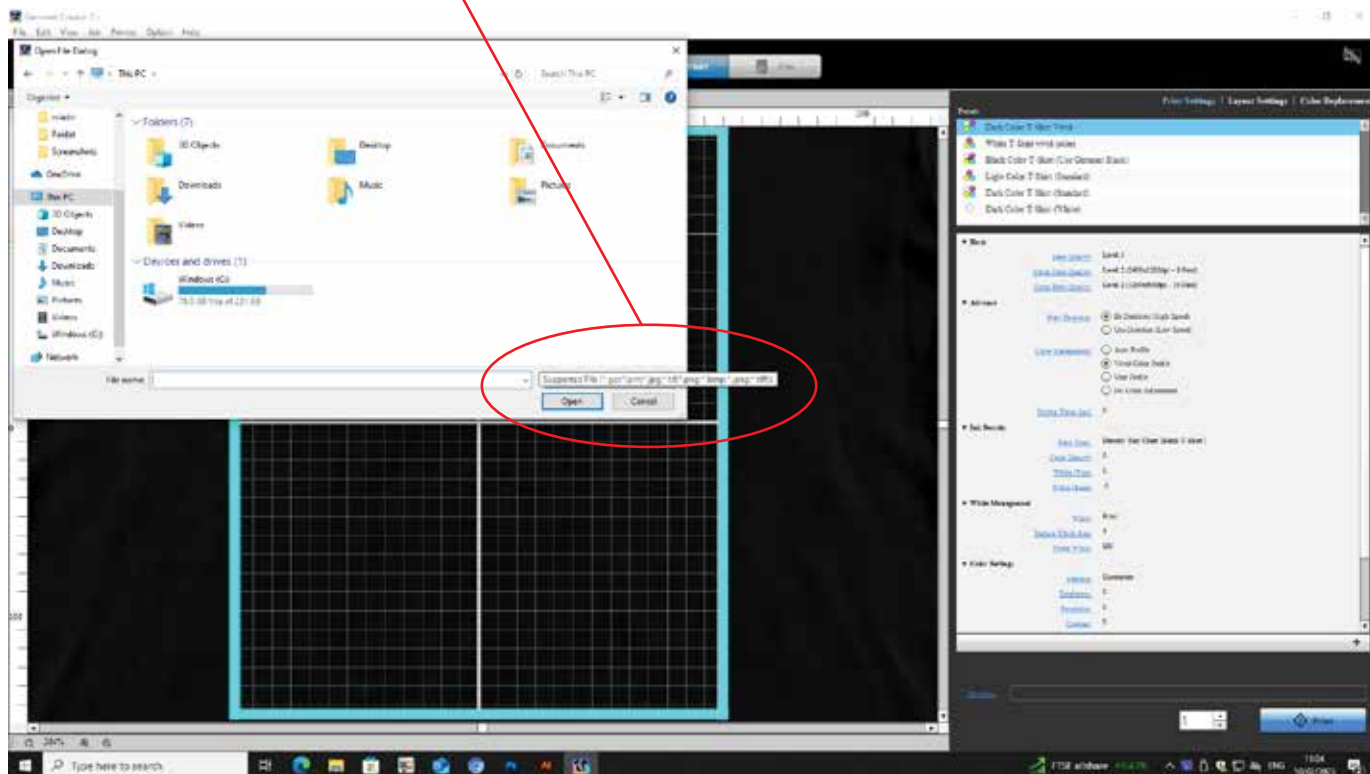


Heat press the image in 175 C for 90 seconds. REMEMBER to use baking paper to protect the image.

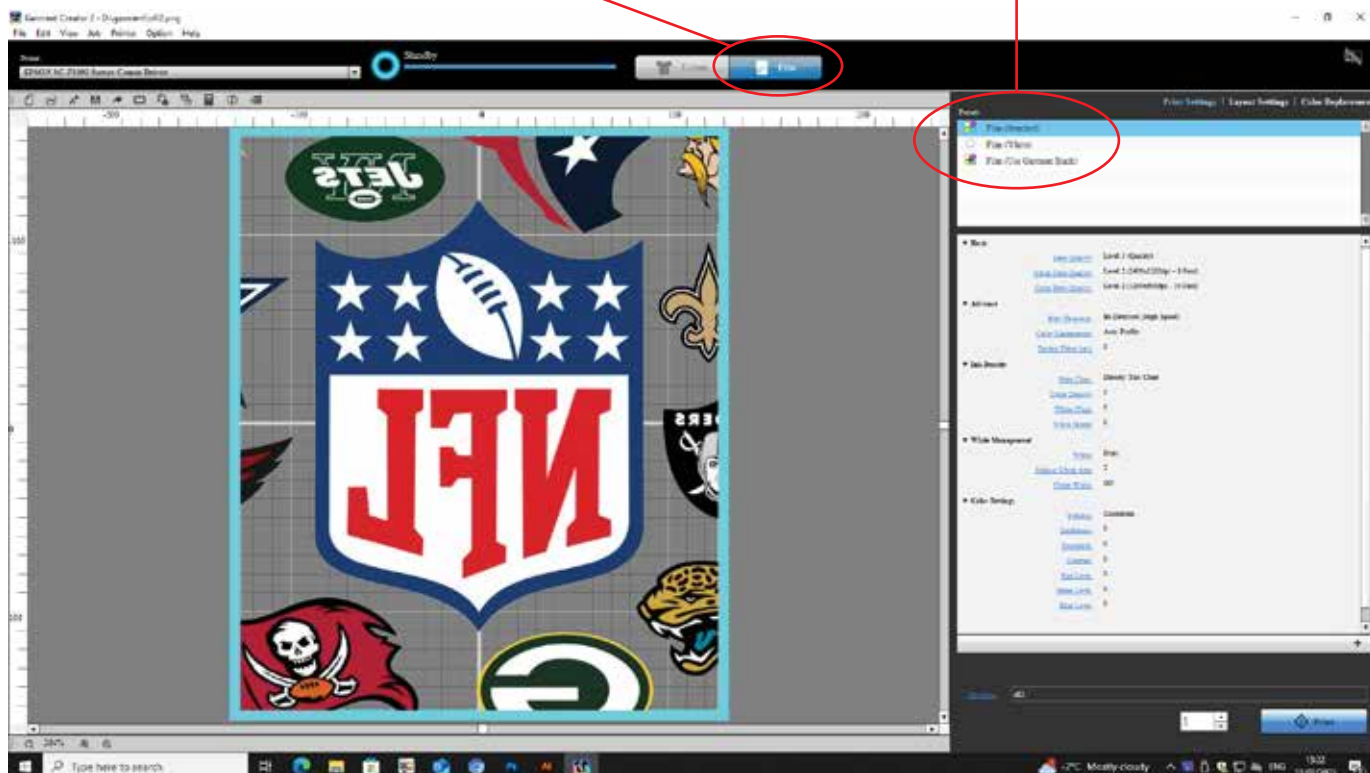


Printing on Film

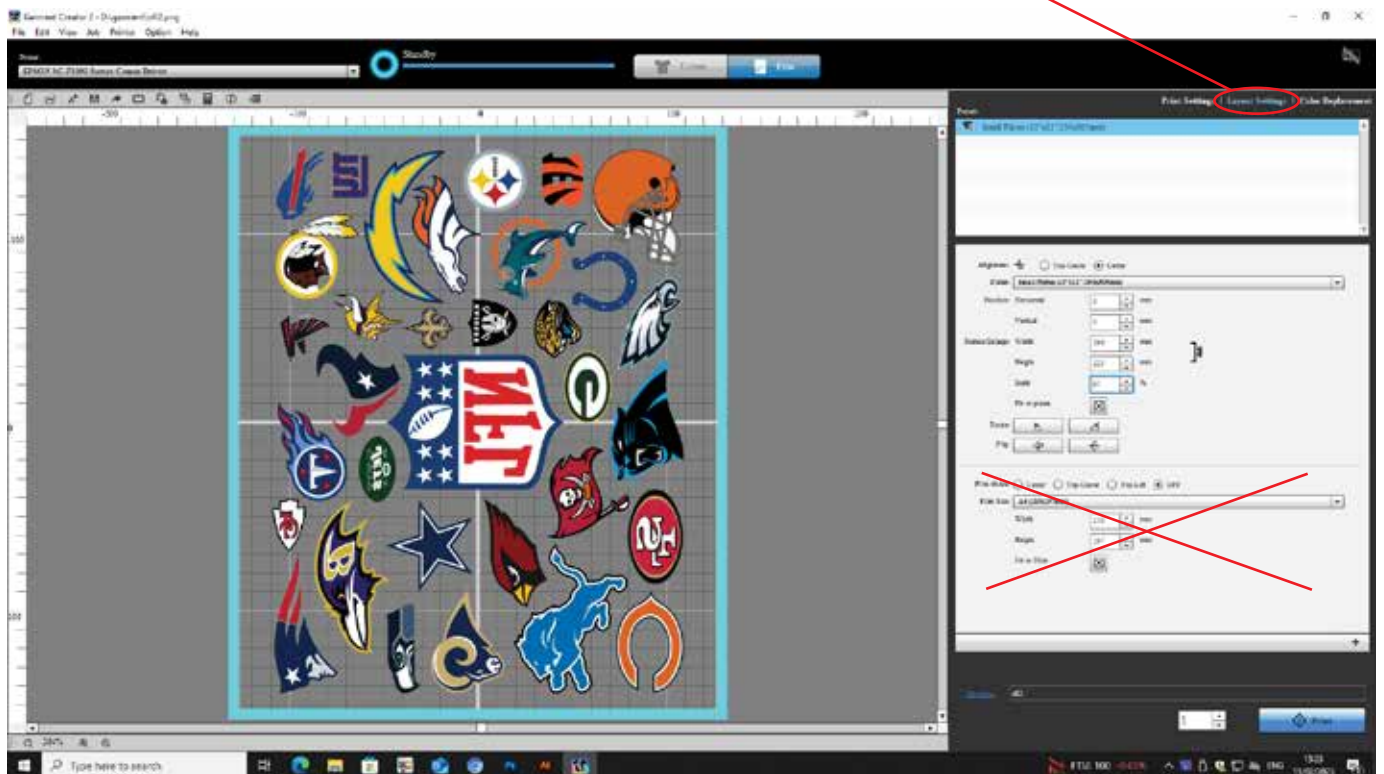
Open your file in Garment Creator 2.
Recommended Color mode is RGB.
These are supported file forms.



Choose a suitable profile.
(Use Garment Black means that black ink
is not applied, so it is the base of the T-shirt.)
Choose Film.



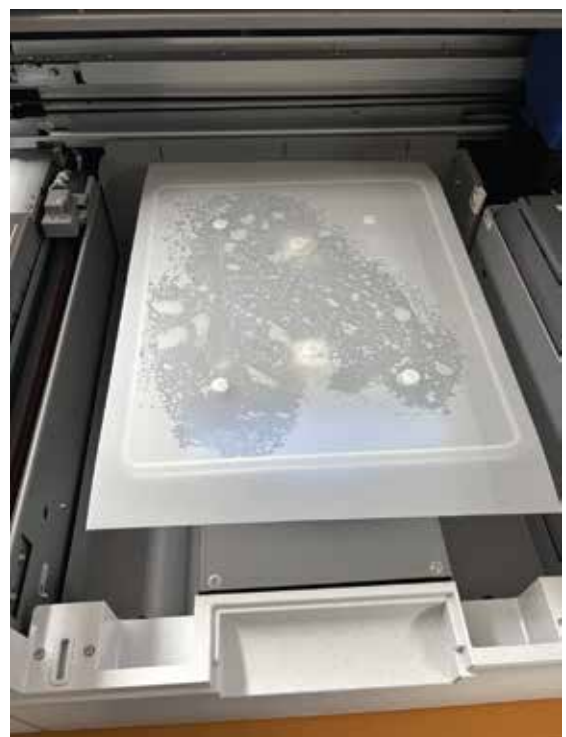
In Layout Settings you can scale, fit to plate, rotate and flip the image.



Spray some water to the glass bed



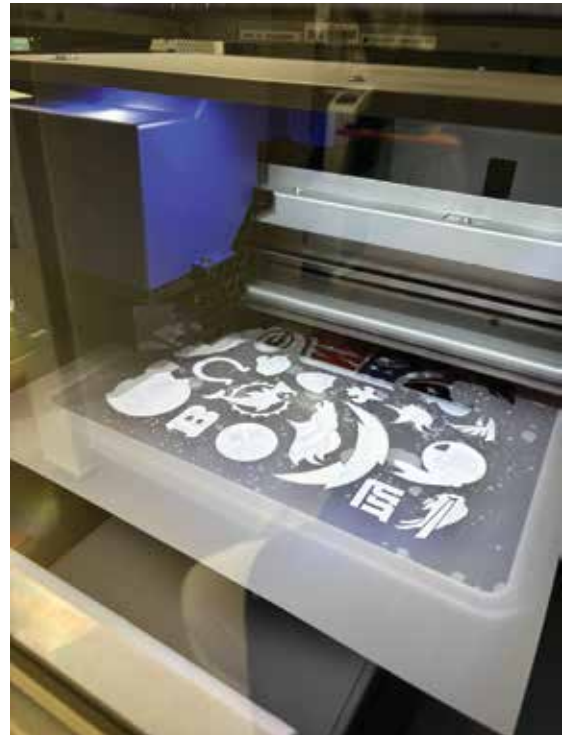
Place the on the bed. Water will hold it on place.



Colours will be printed first.



Then white.



Dry the bottom of the film on hand towel.



Place the film on the bottom of the plastic box and sprinkle the hot melt powder on the printed areas .



Move the powder on the film back and forth and pour extra powder off.



Place the film to Siser heat press (make sure the upper plate doesn't touch the powder) in 200C° about 10 minutes, until the melted powder looks like orange skin.



Let the film cool down.

You can also prepare the film before hand and press the images another time.

For cotton:

Film is ready to be pressed in 175° for 15-20 seconds. Let the film cool for 60 seconds and remove it. Then press again for 15 seconds.