

HOW TO USE SAWGRASS SG500 SUBLIMATION PRINTER

PRODUCTS FOR SUBLIMATION:



Ceramic mug

- max. print size 200x80 mm
- heat press temp. 180 C°, time 180 sec



Enamel mug

- max. print size 200x60 mm
- heat press temp. 200 C°, time 275 sec



Mouse pad

- size 230x190x5 mm
- recommended print size ~ 235x195 mm, to avoid white edges
- heat press temp. 200 C°, time 40 sec.



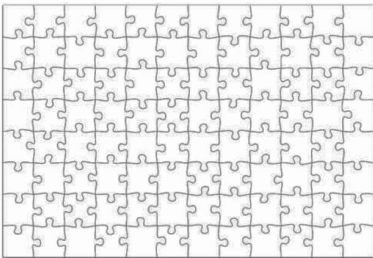
Key chain

- size 22x125 mm (one side)
- recommended print size a bit bigger, to avoid white edges, ~27x270 mm (both sides)
- heat press temp. 200 C°, time 40 sec



Patch

- diameter 80 mm with the border and 75 mm printing area.
- recommended print size ~78 mm, to avoid white edges
- heat press temp. 200 C°, time 40 sec



Puzzle

- size 190x280 mm
- recommended print size ~195x280 mm, to avoid white edges
- heat press temp. 185 C°, time 45 sec

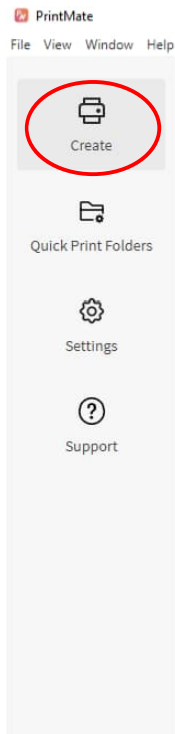


Magnet

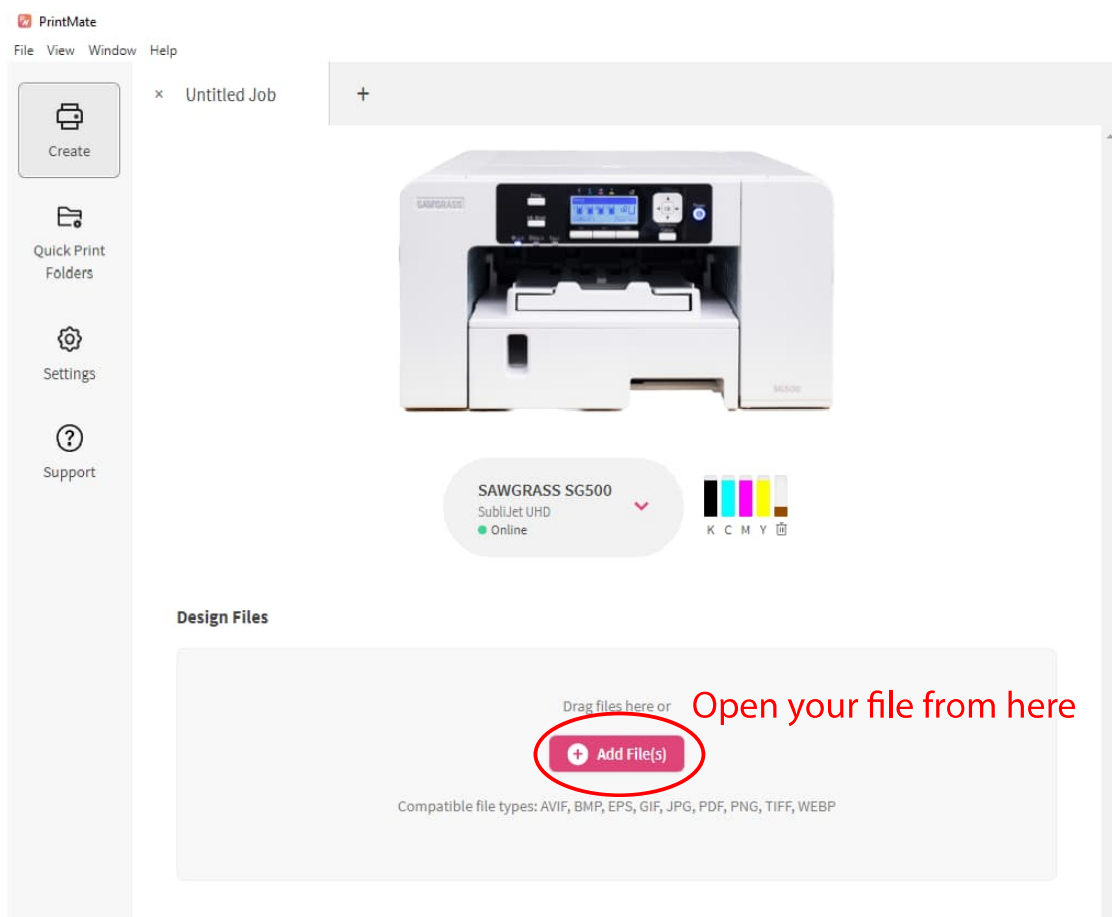
- size 75x55 mm
- recommended print size ~80x60 mm, to avoid white edges
- heat press temp. 180 C°, time 50 sec

Use for example Illustrator or Inkscape to prepare your A4 size layout (remember to leave 5 mm margin on the edges) and save it in pdf. -form.

Then open Sawgrass Print Utility -software and follow these steps.



Click here to get started



- Create
- Quick Print Folders
- Settings
- Support

× Untitled Job

+



SAWGRASS SG500
SubliJet UHD
● Online



Design Files

Add

Crop to Image Area

undefined-page-1
209.93 x 296.93 mm | 200 dpi
Image will not fit with current paper size selection.

Fit to Paper Size



Width	Height	DPI	Rotation	Spacing	Repeat
209.93 mm	296.93 mm	200	0°	2.54 mm	1



Scroll downwards

Print Settings

Select a Preset ▼

Quick Print Folders

Settings

Support

Quick Print Folders

Settings

Support

General Color Management

Job Settings

Mirror

Registration Marks Add Bleed

Center on Page

Product Choose the material where you are pressing to

Ceramic

Media Size Choose A4

A4

Print Quality

High Quality

- Acrylic
- Ceramic
- Glass
- HTV
- MDF Board
- Metal
- Neoprene
- Polyester
- Siser EasySubli HTV
- Tumbler

Media Type

Truepix Classic

Media Source

Tray 1

Print Orientation

Portrait Landscape

Pages

All

From to

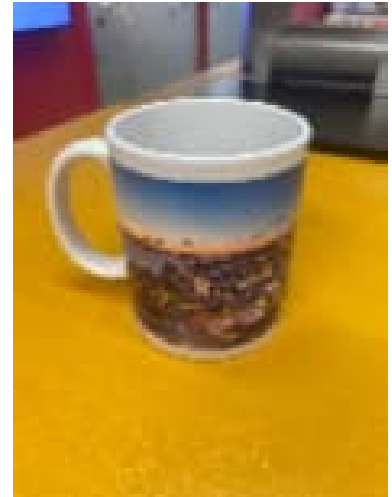
Copies ▲
▼

Print ^

Send your job to the printer

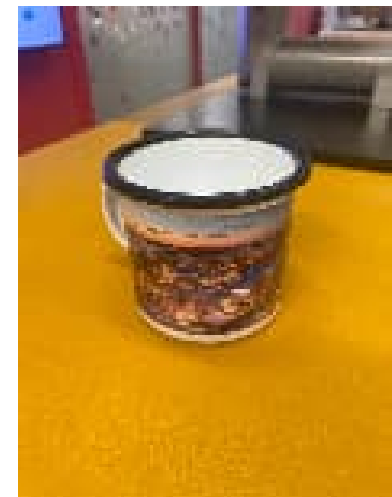
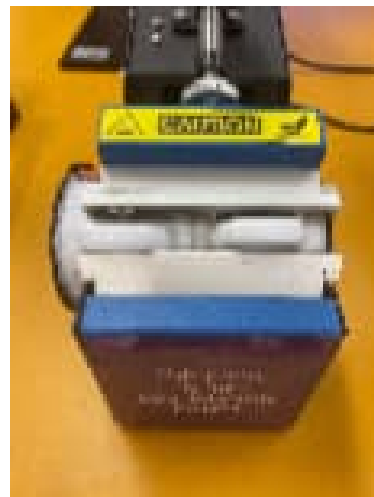
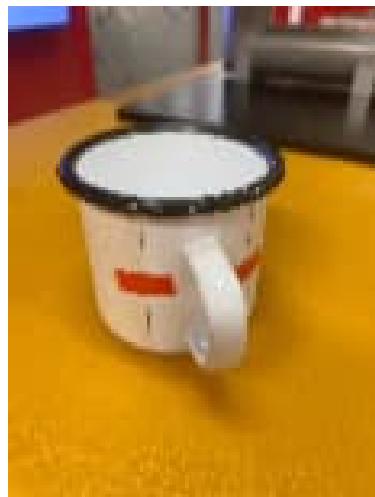
Turn on the heat press, it takes some time to warm up.

Then follow these instructions:



Ceramic mug - heat press temp. 180 C°, time 180 sec.

Cut the print from the paper and tape it the printed side towards the product with the red tape. Place the set in the press.



Enamel mug - heat press temp. 200 C°, time 275 sec.

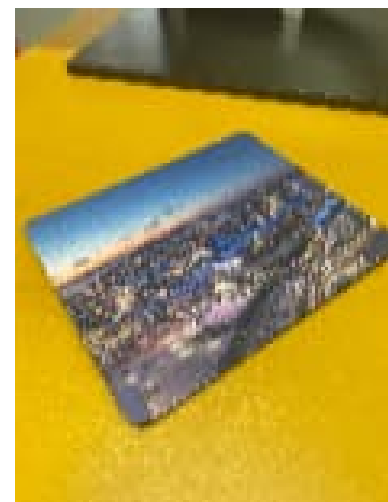
Cut the print from the paper and tape it the printed side towards the product with the red tape. Place the set in the press.

When pressing the enamel mug, use another mug to keep the pressure even!



Key chain - heat press temp. 200 C°, time 40 sec

Cut print from the paper and tape it printed side towards the product with the red tape.
Place the set in the press with the paper side up.



Mouse pad - heat press temp. 200 C°, time 40 sec.

Cut print from the paper and tape it printed side towards the product with the red tape.
Place the set in the press with the paper side up.

Puzzle - heat press temp. 185 C°, time 45 sec

Cut print from the paper and tape it printed side towards the product with the red tape.
Place the set in the press with the paper side up.

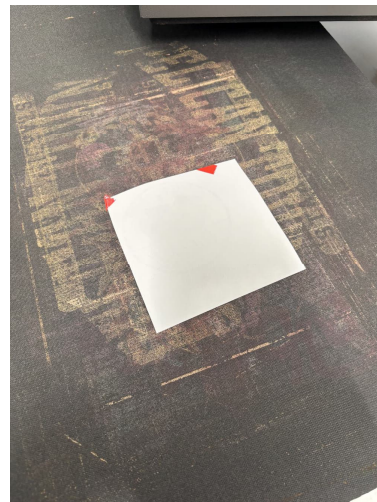
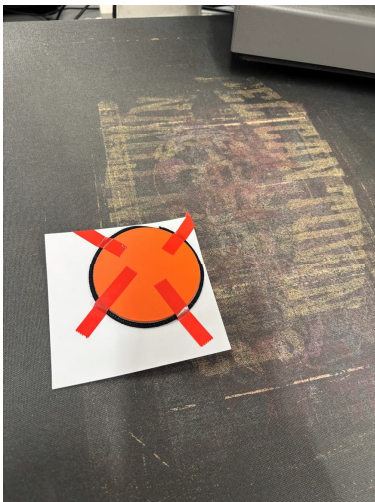
Magnet - heat press temp. 180 C°, time 50 sec

Cut print from the paper and tape it printed side towards the product with the red tape.
Place the set in the press with the paper side up.

Patch - Heat press temp. 200 C°, time 40 sec.



Use these red silicone plates to give more pressure when pressing the image. First place the fabric side of the patch towards the picture and then place the silicone plate on top of the patch.



Then use the red tape to attach the set to the paper and when placing the set to the press, turn it up side down.



If you are doing multiple patches, don't cut them off the paper. Tape all the patches and plates to the paper and press them at once.

Remember to place the set in the press with the paper side up!!