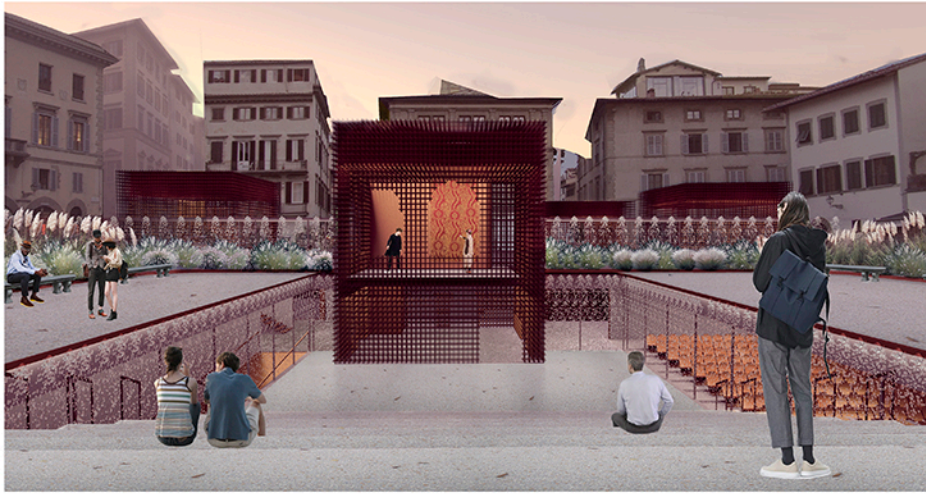


FRACTURE



MASSING:



Positive: The building mass is based on a square base with a long building arm to the perimeter and a central courtyard.

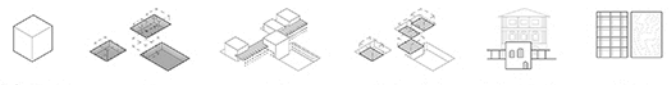
Division: The building is divided into two main parts to generate the courtyard.

Skills: The massing is based on the courtyard, the plaza and the central courtyard, and a central courtyard to connect the building.

Drop: Massing is added to the ground to bring the mass of the building to the light background.

Connect: A strategy is added to connect the building to the ground.

CONNECTION TO ARTS & CRAFTS & PLACE & TIME:



Single meaning works: Working to have single and clear use based on a single purpose building typology.

Rain: The building is placed in a central courtyard to generate light and shade in the courtyard.

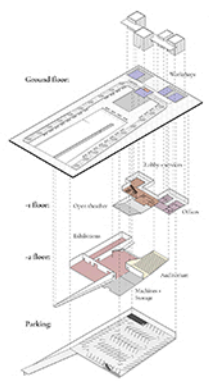
Facade: The facade is the central courtyard to generate light and shade in the courtyard.

Emphasis on workshops: The workshop space is based on a central courtyard to generate light and shade in the courtyard.

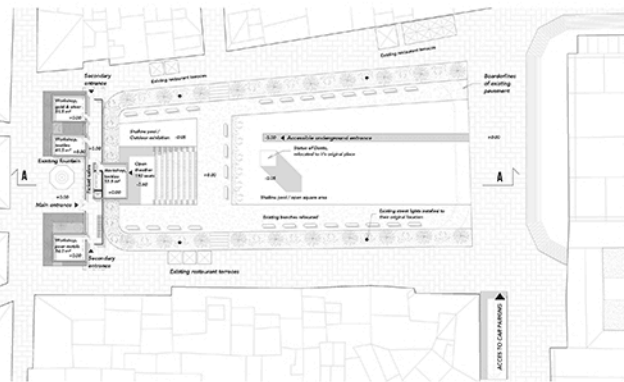
Re-interpretation of ornamentation: The building is based on a central courtyard to generate light and shade in the courtyard.

Materials: The building is based on a central courtyard to generate light and shade in the courtyard.

SPACE DIVISION:



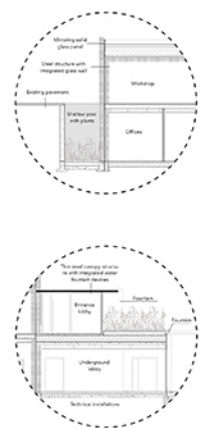
GROUND FLOOR PLAN 1:400



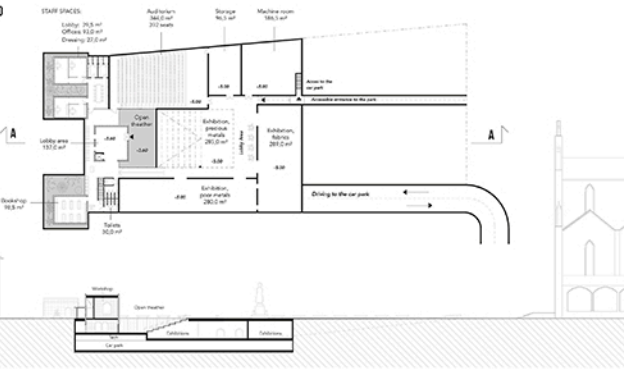
PIAZZA AXONOMETRY



STRUCTURAL SECTIONS 1:100

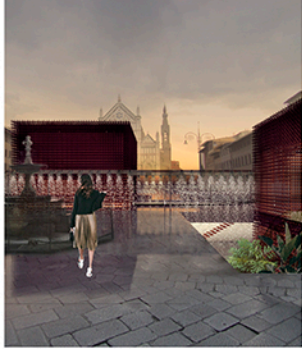


UNDERGROUND FLOOR PLAN 1:400

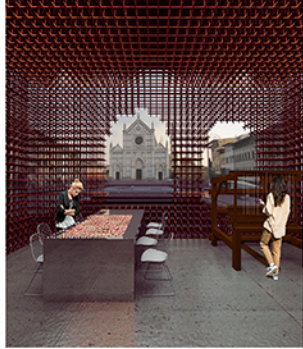


TOTAL SQUAREMETERS: 2161,0 m²
Car park included: 4358,0 m²

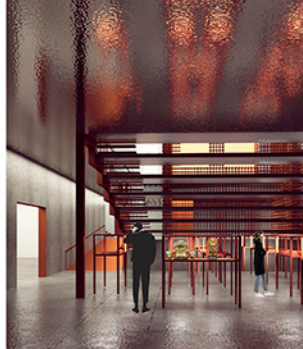
ENTRANCE



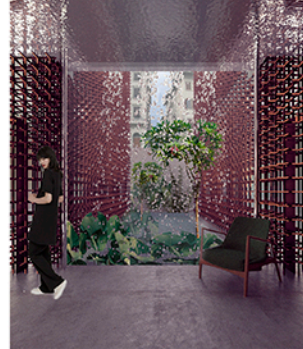
WORKSHOP SPACE: TEXTILES



EXHIBITION HALL: PRECIOUS METALS



OFFICE SPACE



EXIT ROUTE



PARK: SHALLOW POOL

